

SHOFAR

JANUARY - FEBRUARY 2014 | TEVET - SHEVAT - ADAR 5774

ZACHOR V'SHAMOR

By Rabbi Carolyn Braun

זָכוֹר אֶת־יוֹם הַשַּׁבָּת לְקַדְּשׁוֹ (Exodus 20:8)

Remember the Sabbath day to sanctify it.

שָׁמֹר אֶת־יוֹם הַשַּׁבָּת לְקַדְּשׁוֹ (Deuteronomy 5:12)

Guard the Sabbath day to sanctify it.

And so, there they were; God, the children of Israel, and Moses, experiencing what we now call the *aseret hadibrot*, the Ten Utterances. “Remember (*zachor*) the Sabbath day in order to sanctify it,” was number four on God’s list. Years later, when Moses was again relating the experience (at its second telling in Deuteronomy), he reported God as saying, “Guard or observe (*shamor*) the Sabbath day in order to sanctify it.” Those who read the Torah closely are surprised to see two different words related to this commandment. We want to ask,

‘Well, which is it – remember or observe? And if they are the same, why use two words? And if they are not the same, what is the difference between these two words; why does one come before the other; and most of all, does it make any difference in my life?’

Our commentators – to whom any change in wording is tantamount to a sonic boom, made a few suggestions. *Zachor* - remember, refers to all the positive things we can do to help us remember to make Shabbat special. Special foods, long walks, no rushing around in the car to get to practices, lessons, shopping, etc. are all ways of ‘remembering.’ *Shamor*, guard/observe then, refers to the things we don’t do in order to make Shabbat special. So we don’t use money, light fires, go to work and shlep from place to place so that we will be able to remember that it’s Shabbat!

I remember a colleague’s sermon that spoke about how her family had stopped speaking to one another in meaningful ways because everyone was constantly on his or her ‘device.’ Thinking they might be able to *zachor* (remember) better when they were ‘unplugged,’ she instituted a *shamor* (observe) concept by saying that all devices must be shut down on Shabbat. Her kids were relatively young, so they didn’t really protest, but it turned out that she and her husband had a particularly hard time at the beginning! When you think about it, when we are “plugged in,” we cannot be aware of the beauty of creation around us. When we are plugged in, we can forget about life. When we are plugged in, Shabbat cannot enter.

So why might ‘remembering’ come before ‘guarding/observing?’ Well, first of all, I think it is good practice to begin with the positive. We enhance and beautify the day in order to make it special. Experiencing the ‘special’ helps us change our behaviors and make different choices. Making things special though, will mean putting other things aside. Perhaps our sages are suggesting that we must first make the effort to experience the beauty and then we guard against destroying the experience.

The concepts of *zachor* and *shamor* are relevant to us outside of Shabbat, as well. This month we remember (*zachor*) Dr. Martin Luther King Jr. and we observe/guard (*shamor*) January 20th as Martin Luther King day. “Remembering” Shabbat only one day a week without carrying its message into the work week, is like remembering Dr. King’s messages only one day a year, and ignoring it the other 364 days of the year. The purpose of ‘remembering’ and ‘guarding’ is to deeply integrate the values of the observance into our lives. Remembering is never enough. We can remember the racial disparity practiced by Americans in the 1960’s, but unless we guard against its return; unless we have laws protecting all Americans – black and white, straight and LGBT, religious minorities, women, etc., we will be in danger of losing whatever moral stature we gained through Dr. King’s (and others’) persistence. Once we experience equality, especially those of us who have been at the bottom of the ladder, I hope that we would want to guard ourselves from ever going back. And when we finally experience a true Shabbat: a day where we can rest

continued on page 4 >>



IN THIS ISSUE:

- 1 **Zachor V'Shamor**
Rabbi Carolyn Braun
- 3 **President's Message**
Irwin Gratz
- 3 **TBE Awarded Grant Toward Renovation of Youth Lounge & Library**
- 4 **What's New at Kadima Beth El? Just Ask a Student!**
Melanie Weiss and KBE students
- 5 **Upcoming Programs**
- 5 **January - February Anniversaries**
- 5 **Welcome New Members**
- 6 **Committee Updates**
- 6 **Save the Date: A Night of Jewish Baseball Benefitting TBE**
- 7 **Condolences & Todah Rabah**
- 8 **Donations & Tributes**
- 10 **January - February Calendar**
- 11 **Sisterhood Donation Underwrites New Tablecloths**
- 11 **Membership Business Directory**
- 12 **Weather Alerts & Temple Closures**

TEMPLE BETH EL'S MISSION

Our vision is to be an embracing, supportive and vibrant community which observes Judaism in the Conservative tradition and which is devoted to the perpetuation of Jewish values and culture. Temple Beth El honors the diversity of its members and is committed to their spiritual growth.



TEMPLE BETH EL

SCHEDULE OF SERVICES

All are welcome.

Monday through Friday	6:50 am
Friday evening Kabbalat Shabbat service	5:30 pm
Saturday (Shabbat) and Jewish holidays	9:30 am
Sunday	9:00 am
Secular holidays	8:30 am

EXECUTIVE COMMITTEE 2013-2014

President - Irwin Gratz

Leadership Team:

July-Sept. 2013 - Adam Arens

Oct.-Dec. 2013 - Jon Brier & Judy Gatchell

Jan.-March 2014 - Irwin Gratz & David Brenerman

April-June 2014 - Joan Levy

Vice Presidents - Adam Arens, Jon Brier & Joan Levy

Treasurer - Jon Brier

Karen Lerman

At Large: Barbara Dichter

Ex officio:

Rabbi Carolyn Braun

Jodi Veysey

TEMPLE BETH EL 2013-2014 BOARD OF DIRECTORS

Adam Arens	Irwin Gratz
Dauna Binder	Judy Gatchell
Jon Brier	Karen Lerman
Barbara Dichter	Joan Levy
Becky DeLois	Fae Silverman
David Brenerman	Katie Small
Kate Foye	Bob Zellan
Jodi Freedman	

Rabbi Carolyn Braun

Jodi Veysey, *Administrative Director*

Melanie Weiss, *Kadima Beth El Director*

Carol McKeen, *Bookkeeper*

Kelsie Camire & David Jacobs, *Administrative Assistants*

Deena Schoenfeld, *Communications Director & Special Events*

Bob Bradbury, *Custodian*

Rabbi Emeritus - Harry Z. Sky, D.D.

Cantor Emeritus - Kurt Messerschmidt

Shofar Design & Production - Deena Schoenfeld



THE RABBINICAL ASSEMBLY

PRESIDENT'S MESSAGE

Irwin Gratz

As a community of religious faith, it is entirely appropriate that we draw some inspiration from the heavens above. Earlier this year, we learned that the Voyager 1 space probe has begun experiencing what scientists call “interstellar space.” It’s a region where charged particles from other stars now far outnumber those emanating from our own sun. It appears to have happened in August of 2012, though it took additional measurements this year to confirm the finding.

For the people who worked on the Voyager program, this was a milestone 40 years in the making. They had spent years planning for the launch of the spacecraft in 1977, then guided it through fly-by’s of Jupiter in 1979, Saturn in 1980, then monitored instruments through the long wait that followed.

Back in 1992, farsighted members of our congregation embarked on another long-term mission: to build an Endowment Fund for our Temple. Over the course of several years, they raised \$3.5 million dollars in contributions to the fund. Beginning in 1996, it began contributing annually to the Temple’s budget. Invested wisely, our Endowment Fund has continued to grow, hitting \$5 million by last October 31. It now makes annual contributions that amount to nearly a third of the Temple’s operating budget. It is nearly impossible for me to imagine what Temple life would be like were it not for the work and contributions that went into that fund those many years ago.

We don’t know what financial challenges lie ahead. But the Temple Board has decided it is time to bolster our Endowment Fund. It has voted to explore a new campaign aimed at raising more money for the fund, which, in turn, would increase its ability to contribute toward our annual budgets. It’s not too soon for you to begin thinking about how you might take part in this effort. Pledges to an Endowment Fund represent an investment in our future. When the time comes, you’ll learn more about the many ways you can make a pledge, including in your estate plan. Your contribution will be part of your legacy to your children, grandchildren, and generations yet to be born. You will help ensure that a vital, active Temple Beth El will remain part of the Jewish landscape in greater Portland.

For how long? Well, let’s return to outer space. Voyager 1 and its twin, Voyager 2 (also headed out of the solar system) are slowly losing power as the plutonium in their electric generator decays. Engineers believe that about ten years from now, there will be too little power left to run any of the scientific experiments and, a few years after that, too little to power the radio it uses to communicate with Earth. But, the space probes also carry, a gold-plated record, a “message in a bottle” we are casting into interstellar space. It will tell whoever finds it a lot about us. But perhaps nothing more important than here were people who could dream of a future time, beyond their own.

To complete this analogy, past President Charlie Miller reminds us of the immortal words of Theodore Herzl -- “*Im tirzu, ayn zo agadah* – If you will it, it is not a dream.” When the time comes, I hope you will join with me in fulfilling the dream and enhancing our lasting legacy at Temple Beth El. ■

TEMPLE BETH EL AWARDED GRANT FROM THE SAMUEL L. COHEN FOUNDATION



TOWARD RENOVATION OF OUR YOUTH LOUNGE & LIBRARY

Temple Beth El is pleased to announce that we have received a generous grant from the Samuel L. Cohen Foundation, earmarked to renovate the area behind the Social Hall into a beautiful new Youth Lounge and Library! Following months of planning and grant writing, receipt of these funds will now allow us to open up a previously unusable space and make a welcoming, warm and inviting area for children and adults alike. From Kadima Beth El students and the TBE Teen group to visitors and congregants of all ages, we hope this new space to become a central point for studying, reading and learning.

Since the library will be moved during the renovation phase, we ask that all book donations be put on hold until further notice. We look forward to a grand reopening of the Youth Lounge and Library in the near future!



Photo for illustration purposes

WHAT'S NEW AT KADIMA BETH EL?

Just ask a student!

Melanie Weiss, Kadima Beth El Director



What's really new at Kadima Beth El? Well, when you want to know something, you go right to the source! Here are some updates from Kitah Hey-Vav (our 5th and 6th graders) who wanted to share what they'd been working on when they wrote these articles in late October. (In true Jewish fashion, you ask us a question, and we'll give you a bunch of answers!)

Stay tuned for more updates from me, Kadima Beth El's great teachers, and our amazing students! ~ Morah Mel

The Kadima Beth El Projects are SOOO amazing. Last time the choices were The Tanakh Puppet Show and the tour of Israel. I did the Tanakh Puppet Show (again). We did three stories. First, Jacob and Esau. Second, we did the 12 spies. The last one was about Samuel and his servant. Now our choices are Ritual Objects and Time Machine Tour Guides. Since I got to do the Time Machine Tour Guide last year, I got to do the Ritual Objects. It's only the first day in and there is so much drama! We've got the Fourth commandment saying two different things at two different times. The first time, it says 'Remember the Sabbath,' *zachor* Shabbat, and the other saying 'keep/guard the Sabbath,' *shamor* Shabbat. Crazy, right?!

~ Behn-Eban Smestad

On Wednesday (October 20) some of us did a tour of Israel. What we did was learn about Israel, places in Israel, and Israel's national anthem. At the beginning of the tour we were on a "plane ride" to Israel. I talked about Israel's national anthem and then we all sang Hatikvah. Previously, we had put signs up around the room representing places in Israel. We went from place to place, reading about that place. We didn't have scripts for all of them though, like the Negev Desert. I did Jerusalem, Tiberias Hot Springs, and Mt. Hermon. Overall, it was a really fun project and I had a blast! ~ Riley Johnson

In Hebrew School right now the 3rd, 4th, 5th, and 6th graders are working on two projects. The first project some of us are doing is called Ritual Objects. In Ritual Objects we are working making Jewish objects that we can use. For example we are planning to make candle holders, *kippot*, and Kiddush cups. We are going to decorate all those and it is going to be a lot of fun.

For the candle holders we can decorate them with what we think is really important about lighting the candles. Also, one thing I learned is that there is one time saying *zachor*, remember the Sabbath. And then the second time saying *shamor*, keeping the Sabbath. ~ Tova Kemmerer ■



KBE students created Judaica for their Ritual Objects project.

ZACHOR V'SHAMOR *continued from page 1*

our souls, take note of our blessings, and then re-focus our weekday lives, as well, on a deeper reality; we will do whatever we can to treasure it, and to preserve and guard it from being taken away.

And so, as we bring in Shabbat singing, *L'cha Dodi*, we sing the line: *shamor v'zachor b'dibur echad* – "Guard' and 'remember' were uttered as one." On Shabbat, the two concepts come together as one. May we all be able to *zachor* (remember) and *shamor* (guard) our values until they are completely integrated into our lives. ■

JOIN US FOR THESE UPCOMING PROGRAMS



FAMILY SHABBAT SERVICE & COMMUNITY SHABBAT DINNER

Friday evenings, January 10 & February 7, 2014

- 5:30 pm - Family Kabbalat Shabbat Service

- 6:30 pm (approx.) Community Shabbat Dinner

TBE's religious school program, Kadima Beth El, invites the entire congregation to our monthly special Shabbat Family Service and Shabbat Dinner. Please join us for this

wonderful opportunity to celebrate Shabbat together with old friends and new over a joyous Shabbat meal! Menus to be announced.

Cost for Shabbat Dinner:

Adults - \$10, Children (age 4 - 12) - \$6, Children (3 and under) - no charge; Family maximum - \$25; Kadima Beth El Families - no charge (included in school tuition).

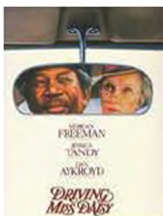
RSVP to the TBE office by Weds. January 8 for the January dinner and by Weds. Feb. 5 for the February dinner at office@tbemaine.org, tel. 774-2649.

The Adult Jewish Learning Committee presents TBE'S ANNUAL WINTER FILM SERIES

Saturdays, at 7:00 pm (- see dates below)

Admission is free. All are welcome.

Temple Beth El's Adult Jewish Learning Committee (AJLC) continues the tradition of presenting a short series of quality films dealing with Jewish issues. We hope to provide an opportunity to think about Jewish cultural and historical issues. Two of the films are in a more serious vein, while the third film is definitely humorous in nature. There will be an opportunity to informally discuss the films after the screenings. However, our primary goal is to enjoy the films and each other's company. Youth and teenagers are welcome! Popcorn and soft drinks will be served.



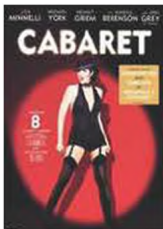
Saturday, January 11

Driving Miss Daisy

99 minutes - Comedy/Drama. Rated PG. (1989)

An old Jewish woman and her African-American chauffeur in the American South have a relationship that grows and improves over the years.

Directed by Bruce Beresford. Starring Morgan Freeman, Jessica Tandy, Dan Akroyd.



Saturday, January 25

Cabaret

124 minutes - Drama/Musical. Rated PG. (1972)

A female club entertainer in Weimar Republic era Berlin romances two men while the Nazi Party rises to power around them.

Directed by Bob Fosse. Starring Liza Minnelli, Michael York, Helmut Griem.



Saturday, February 8

The Producers

88 minutes - Comedy/Musical. Rated PG. (1967)

Producers Max Bialystock and Leo Bloom make money by producing a sure-fire flop.

Directed and written by Mel Brooks. Starring Zero Mostel, Gene Wilder, Dick Shawn.

MAZEL TOV מזל טוב

JANUARY ANNIVERSARIES

- 2 John Riley and Carolyn Turcio-Gilman
- 3 Jerry and Marilyn Sherry
- 6 Joe Manning and Linda Jacobs
- 7 Richard and Adele Mack
- 15 Charlie and Eddy Dibner
- 24 Michael and Harriet Turkanis
- 29 Gil and Marilyn Prawer

FEBRUARY ANNIVERSARIES

- 13 David and Lynne Unger
- 14 Lliam Harrison and Carol Nemeroff
- 14 Bill and Denise Swyers
- 15 George and Bobbie Gordon
- 25 Michael and Rena Becker
- 26 Larry Brown and Sandi Goodman-Brown



NEW MEMBERS

Jeffrey Bendremer & Danielle Wozniak and their children Soloman and Eliana

Tracey Hall and Bill Burge and their daughter Kaspar

Jonathan Rakin

HOUSE COMMITTEE REPORT

Dan Gatchell, Chair

- The locking mechanism to center lower foyer door has been repaired.
 - The new gas burner has been installed in the #2 roof top HVAC unit.
 - All roof drains have been cleaned of debris using the new industrial shop vacuum. The committee sends their thanks to Gregg Garson.
 - Plywood covers have been placed over the two boiler room windows to prevent draft and heat loss. They have been painted to try blend in with the brick color. These windows will be scheduled for replacement in the future, hopefully next year. Again, a big "Thank You" to Gregg Garson.
 - Plastic has been installed on the office windows. The committee thanks Karen and Geoff Hindall, Cliff Kucine and Tom Berman.
 - The new boiler control (outside temp reset) energy saving device has been installed by Johnson and Jordan.
 - An additional HVAC air supply has been added to the computer tech room. However, some further modifications may have to be made in the future.
- Dan Gatchell would like to thank all House Committee members and volunteers for their work. And thanks to all that have donated funding for some of these projects. ■

TIKKUN OLAM COMMITTEE

Carolyn Turcio-Gilman, Chair

The Tikkun Olam Committee wishes to thank the congregation for their generous donations to the Hanukkah Lights Program. With your help, Temple Beth El provided warm winter clothing, boots, and some toys to 36 needy children in our community. Jewish Family Services, who sponsor this program, were very grateful for your thoughtfulness and generosity. Tikkun Olam has also assisted Cedars in finding someone to read to a visually impaired resident. Thank you Dr. Stephen Simons for your willingness to help. If anyone else wishes to volunteer for reading to the visually impaired, please contact Carolyn Turcio-Gilman, 899-2226 or cturciogilman@yahoo.com. ■

ADULT JEWISH LEARNING

Like the movies? TBE's Adult Jewish Learning Committee is once again hosting a Winter Film Series, providing entertainment with a Jewish touch. Join us on three Saturday nights in January and February. Admission is free and all are welcome! See page 5 for details. ■

YAD L' YAD - TBE'S CARING COMMITTEE

Becky DeLois, Chair

207-899-4068, radelois@gmail.com

Looking back on 2013 with regard to what Yad L'Yad has accomplished, the list is long. There has been much sadness with the aging and death of so many members on the one hand and great pleasure recognizing a new birth when one comes along. We also enjoy welcoming new members with those gift baskets we have made. We seem to be good at creating meals both in our homes and at the temple and delivering them to those who are recovering from health challenges to those who are mourning the death of a loved one, to those who are celebrating a new birth. Many thanks go to the Wilson Family Fund which supports both Shabbat shiva and newborn meals. Many thanks to those who faithfully drive a temple member to every Saturday Shabbat service. And the cards, oh, the many cards that are sent every time we hear of someone who needs cheering up for whatever trial they are experiencing have been immensely appreciated.

I want to express my gratitude to the Yad L'Yad volunteers who lovingly take time out of their busy lives to give back to you, our congregation. They truly are a bright light in our temple. Thank you, thank you to them for making Yad L'Yad what it has grown to be.

My prayer and hope for 2014 is to find temple members to join this truly special group so we can do more for our congregation. As people get comfortable informing us of their needs, the more volunteers we can use to provide willing hands to reach out to the hands that could use encouragement, be it kind words in a card, a meal, a visit, a call, a ride.

May you all be healthy and safe throughout the winter months and call or email when you need us. ■

save the date!

A NIGHT OF JEWISH BASEBALL

Benefitting Temple Beth El

Sunday June 8, 2014

5:00 - 5:30 pm - Meet & Greet for Sponsors

5:30 - 6:00 pm - Silent Auction preview

6:00 - 9:00 pm - Presentation and Dinner

fun  **informal**  **raffle**
meet Jewish ball players  **ballpark fare**



CONDOLENCES

Our sincere condolences to **Anita Gottschalk Weiner** and family on the loss of Anita's sister Norma R. Gottschalk Elowitz, who passed away on Monday, November 25 in Los Angeles, California. Norma is predeceased by her parents Gussy and Oscar Gottschalk. She is survived by her daughter, Heidi M. Elowitz Taylor and husband Brent; her sister Anita Gottschalk Weiner; three nephews, and extended family members. *Zichrona l'vracha* - may Norma's memory be for a blessing.

Our sincere condolences to the **family of Frances Carvel**, who passed away on Tuesday, November 19. Frances is survived by her husband Richard, son Steven and his wife Shelley Carvel, daughter Cynthia Carroll, brothers Sumner and Robert Steinberg, and her beloved grandchildren and great-grandchildren. *Zichrona l'vracha* - may Frances' memory be for a blessing.

Our sincere condolences to the **family of William Troubh**, who passed away on Friday, November 8th. William is survived by his loving wife Nancy; sons Kenneth and wife Stacy of Mill Valley, CA; Jed and his wife Bonnie of Falmouth, ME; Mikael and his wife Helena of Silver Spring, MD and Thomas and his wife Natalie of Hoboken, NJ; Grandchildren, Jared, Jessica, Samantha, Zoe, Alexander, Max, Hannah, Jacob and Isabelle. Brother; Raymond and Jean of New York, NY, and Sister Charlotte and Kevin of Cambridge, MA. *Zichrono l'vracha* - May William's memory be for a blessing.

Our sincere condolences to the **family of James (Jim) S. Kriger** who passed away at Southern Maine Medical Center on Friday, October 18th. Jim is survived by Barbara, his wife of 58 years; his three sons, Andrew of Cape Elizabeth, Samuel and his wife Karen of Norway and David of Tallahassee, Fla. He is also survived by his loving grandchildren, Lindsey, Shannon, William, Rachel and Jared; his sister, Irma Volk of N.Y. and her children Shelley and Jeff. *Zichrono l'vracha* - May Jim's memory be for a blessing.

Our sincere condolences to the **family of Irene A. Mack** who passed away on September 15, 2013 at her home in Naples, FL. She was 93. She is survived by her three children, Martin Mack of Bonita Springs, Fla., Anita Mason of Woburn, Mass., and Murray Mack of Vienna, Va.; as well as three grandchildren. *Zichrona l'vracha* - may Irene's memory be for a blessing.

TODAH RABAH - Thank you!

Ilene and Myron Berman would like to extend a special Todah Rabah to **Lynn Goldfarb and the Yad L'Yad Committee** for the meal Lynn prepared and delivered during Myron's convalescence. It was much appreciated.

To the **TBE Brotherhood, the morning minyanaires, and our members** who participated, for their very generous donations to the Hanukkah Lights Program sponsored by the Jewish Family Services and the TBE Tikkkun Olam Committee. The funds will go far to make life warmer and easier for many.

To our members who participated in and lead Shabbat and holiday services, and who read the Torah portion and Haftarah, during October and November:

Margie Berman, Tom Berman, Barbara Dichter, Julie Ermoloff, Naomi Freidenreich, Rabbi David Freidenreich, Judy Gatchell, Morton Gold, Benjamin Haas, Isabelle Cohen-Johnson, Kadima Beth El students, Sandrea Kornblum, Joy Krinsky, Debbie Kanter, Ellie Miller, Paul Muscat, Sam Nemeroff, Beth Strassler, Rabbi Larry Troster, Sara Kahn Troster, Norm Wilson.

To the **family of Zelda Greenspun** for donating a beautiful cedar bench in honor of Zelda's 90th birthday. The bench now sits in the lower foyer overlooking the courtyard and will be placed outside next summer when we complete some further renovations of a garden area.

To our Chanukah party sponsors and volunteers, who helped make our party a success:
- Judy & Norm Wilson and Karen and Alan Lerman for sponsoring in part the Chanukah party.
- **Debbie Barlock, Judy Gatchell, Connie Goldberg, Tom Berman, Irwin Gratz, Paul Muscat** for volunteering for shopping, peeling, chopping, baking, more peeling, frying, cleaning and tech setup.
- **Karen Hindall, Becky Delois, Tara Gingerich, Ginny Eklund, Talia Timmins, Karen Lerman, Janine Smestad, Jessica Smestad, Jon Brier, Jeanine Collins, Shirley Rosen, Judy Wilson, TBE staff, and our custodian Bob** for helping with more peeling, decorating, set-up, serving, greeting, and cleanup.

To our members who have donated items from our "wish list":
- **Judy and Ben Bertram**, for the new white board easel
- **Stan and Doris Pollack**, for three desk lamps
- **Carolyn Turcio-Gilman**, for the folding card table
- **Matt and Lynn Goldfarb**, for the small refrigerator for the office staff

To **Carolyn Turcio Gilman**, for sewing the decorative fabric panels for our Chanukah party and other special events.

To **Patty & Ross Weber** for sponsoring the Kiddush on Friday, Nov. 22 in memory of Ross' father, Harold Weber.

To those who helped with the Annual Chanukah Gift Shop Sale:
Karen & Samantha Lerman, Barbara Dichter, Jodi & Terry Veysey, Joan Levey, Debbie Barlock, Irwin Gratz, Jon Brier, Dauna Binder, Becky Delois, Jodi Freedman, David Brenerman, Patty Weber, Amy Brier, Cynthia Feiner, Elaine Lewis, and Phyllis Lisi.

To **Gregg Garson** for covering the boiler room windows to help with energy efficiency and for cleaning the roof drains.

To the following who helped with the November Shabbat HaLaila community dinner prep:
Joan Levy, Isabelle Cohen Johnson, Karen Hindall, Emma Hindall, & Dauna Binder.

To **Terry Veysey and Deena Schoenfeld** for their help with set-up and break-down for funeral services.

Todah Rabah to **Geoff and Karen Hindall** for winterizing the office windows.

Todah Rabah to **Tom Berman** for taking care of the audio visual set up for the Morton Gold Concert on Sunday, Nov. 3.

To **Barry Rosen and family** for their donation of two drink dispensers for our TBE kitchen in memory of Barry's father, Murray Rosen. We'll be thinking of Murray at the next TBE event when attendees are enjoying a cold glass of ice tea or lemonade, beautifully displayed in the new beverage dispensers. Barry and his family also donated a variety of glass and ceramic platters and bowls for use at special events.

To **Karen Lerman, Amy Brier and Phyllis Lisi** for organizing and pricing the beautiful new Judaica in the TBE Gift Shop.

To **Karen Lerman** for bringing in donuts for the TBE staff.

To **Tom Berman** for his ongoing maintenance of TBE's computer systems and technical support.

To our volunteers who helped with coordination, food prep, set up and clean up for the delicious Welcome Breakfast for our new members on Sunday, Oct. 20th: **Becky Delois, Carolyn Turcio Gilman, Ginny Eklund, Barbara Peisner, Lisa Arens, Merle Nelson, Jodi Freedman, Judy Wilson and Pat Reef.**

To our Oct. Shabbat HaLaila volunteers: **Joan Levy, Judy Gatchell, Dauna Binder, Karen Hindall, Emma Hindall, Isabelle Cohen Johnson, Tracey Hall, Samuel Kemmerer, Tova Kemmerer, Simon Handelman, Dan Gatchell, Dauna Binder, Isabelle Cohen Johnson, Deena Schoenfeld, Mel Weiss, and Laura Piltch.**

To **Dan Gatchell** for repairing the railing at the boiler room steps.

To **Ellen Handelman, Sharon Craig, and Karolina Duchkova** for their help with KBE's B'Yachad activity on Sunday.

To **Bette and Sam Novick** for sponsoring in part the Community Shabbat dinner on Friday, Oct. 4 in memory of Bette's father Alex Stern.

To **Tom Berman, Dan Gatchell, Jay Baker, Ellis Craig, and Conner Foye** for taking down and storing the Sukkah.

To **Becky Delois, Jodi Freedman and Carolyn Turcio-Gilman** for preparing welcome bags for our new members.

To **Becky Delois and the members of Yad L'Yad, TBE's caring committee**, for their ongoing efforts to arrange for and deliver shiva meals and provide friendly visits and messages of support and comfort to members of our congregation.

To **Debbie Kanter** for proof reading the Nov. - Dec. Shofar newsletter.

ADULT EDUCATION FUND

Charlie and Ellie Miller
Speedy recovery Dan Gatchell
 Charlie and Ellie Miller
Speedy recovery Norm Wilson

BUILDING FUND

Sam L. Cohen Foundation
Youth Lounge/Library Annex Renovation
 Jim and Bonnie Klein
In memory of Jerry Schulman
 Paul and Susan Trusiani
In memory of Helene Neufeld

BROTHERHOOD

Matt and Lynn Goldfarb
In memory of Frances & Samuel Goldfarb
 Phil and Elizabeth Levinsky
In memory of Jacob Levinsky
 Phil and Elizabeth Levinsky
In memory of Frances Bigman
 Phil and Elizabeth Levinsky
In memory of Harry Zaitlin
 Harvey and Kathy Silverman

EDWARD WEISBERG FUND

Mark Kiefner and Nancy Bogg
In memory of Sally Bogg
 Joan and Arthur Cope
In memory of Frances Bigman
 Rita Weisberg
In honor of Bette & Sam's new granddaughter
 Rita Weisberg *In memory of Frances Bigman*
 Rita Weisberg
Speedy recovery Helen Isenman
 Rita Weisberg
In memory of Judith Schwey Benjamin

ENDOWMENT

Charlie and Ellie Miller *In memory of David Bartel & Florence Shanen*
 Charlie and Ellie Miller
In memory of Florence Shanen

GENERAL FUND

Levey Foundation 2013 Grant
 Linda Abromson
Speedy recovery ChiChi Levine
 Nathan Ainspan *In memory of Irene Mack*
 Mark and Kathy Aranson
In honor of the birth of Livie & Stanley Lieberman's granddaughter
 Mark and Kathy Aranson
In honor of the birth of Lorry & Neal Stillman's granddaughter
 Adam and Lisa Arens
In memory of E.C. Nussinow
 Sharon Bresler
In memory of Leonard Joachim
 Steven and Judy Brinn
In memory of Katherin Brinn
 Stan and Judy Elowitz
In memory of Abraham Lister

Abe and Tama Fineberg
Speedy recovery to EC Nussinow
 Abe and Tama Fineberg
In memory of Edith Nussinow
 Abe and Tama Fineberg
Speedy recovery Barbara Gilbert
 Abe and Tama Fineberg
In memory of Arnold Shapiro
 John and Linda Haas
In honor of Ben's Bar Mitzvah
 John and Linda Haas
In memory of Ben's great-grandparents
 Peter Kazon *In memory of Bernard Kazon*
 Peter Kazon *In memory of Shirley Kazon*
 Jim and Bonnie Klein
In memory of Jonas Klein
 Leonard and Anne Kovit
In memory of Jack & Dorothy Greenberg
 Rubin and Sally Laskoff
In memory of Rhoda Freeman
 Rubin and Sally Laskoff
In memory of Shelly Carvel's mother
 Edmond and Leslie Tourigny
In memory of Irene Mack
 Steve and ChiChi Levine
In memory of Herman Wiener
 David and Elaine Lewis
In memory of Bertha "Betty" Silverman
 Myer Marcus *In memory of Saul Marcus*
 Myer Marcus *In memory of Ann Stillman*
 Myer Marcus *In memory of Frances Marcus*
 Myer Marcus *In memory of Harry Marcus*
 Myer Marcus *In memory of Bertha Marcus*
 Jean Martens
In thanks for Erev Yom Kippur Service
 Erwin and Audrey Muscat
 Shirley Rosen *In honor of Jodi & Terry Veysey's granddaughter*
 Shirley Rosen *In honor of Sam & Bette Novick's granddaughter*
 Shirley Rosen *In honor of Karen & Alan Lerman's anniversary*
 Shirley Rosen *In honor of Sally & Rube Laskoff's 65th anniversary*
 Shirley Rosen *In honor of the birth of Tama & Ave Fineberg's great grandchild*
 Ed and Harriet Schultz
In memory of William Baumgarten
 Steve and Peggy Shapiro
Wishing good health to ChiChi Levine
 Peter and Barbara Shaw
In memory of Roberta Seals
 Peter and Barbara Shaw
In memory of Emanuel Shaw
 Peter and Barbara Shaw
In memory of Roberta Seals
 Janet Shur
In memory of Clarice and Barney Shur
 Matt and Bonnie Siegel
 Ernest and Diana Sturman
Speedy recovery Cecelia Levine
 Anita Weiner *In memory of Gussy Gottschalk*
 Anita Weiner *In memory of Hilda Rothschild*

GIFT SHOP

Alan and Karen Lerman
In honor of Barry and Lori Saltz' gift to UNE
 Alan and Karen Lerman
In honor of Lynn Goldfarb
 Alan and Karen Lerman
In honor of Sam & Bette Novick
 Alan and Karen Lerman
In memory of Bill Troubh
 Alan and Karen Lerman
Happy Chanakuh, Shirley Rosen
 Alan and Karen Lerman
In memory of Judith Schwey Benjamin
 Shirley Rosen *Happy Thanksgivakkuh to Karen & Alan Lerman and family*

KADIMA BETH EL HEBREW SCHOOL

David and Nancy Brenerman
In memory of Saul Brenerman
 David and Nancy Brenerman
In memory of Frances Carvel
 Ellen Tabachnick
In memory of Henry Myer Tabachnick, MD

KIDDUSH FUND

Rabbi Carolyn Braun
To celebrate her 19th year at TBE
 Benjamin and Jeri Brem *In memory of George and Adeline Baer Fleisher*
 Temple Beth El Brotherhood
 Matt and Lynn Goldfarb
In memory of their parents
 John and Sheryl Haas
In honor of Ben's Bar Mitzvah
 Harriet Hillson
In honor of Jerry Slivka's marker unveiling
 Ted and Perla Kimball *In memory of Paul Figa*
 Ross and Patty Weber
In memory of Harold Weber

KOOCHER ROBINOV SCHOLARSHIP FUND

Ethel Koocher *In memory of Rhoda Freeman*
 Ethel Koocher *In memory of Willy Shames*
 Jackie Robinov *In memory of Ida Robinov*
 Stan and Sherrie Schatz
In memory of Rhoda Freeman
 Stan and Sherrie Schatz
In memory of Willy Shames

TEMPLE BETH EL MEMORIAL PARK

Alvin Jolovitz *In memory of Barnett Jolovitz*
 Pearl Levine *In memory of Bertha Malkin*

MUSIC FUND

Leah Cohen *In memory of Miriam Kaatz*
 Morton and Esther Gold
In memory of Hazzan Leon Gold
 Shirley Rosen *Speedy recovery Norm Wilson*

RABBI'S DISCRETIONARY FUND

Scott and Camille Davidson
 Cynthia Feiner

DONATIONS & TRIBUTES

Michael Geselowitz
 Adam and Erica Goldfarb
In memory of Marcia Finberg Goldfarb
 Walter Goldfarb
In memory of Marcia F. Goldfarb
 Harriet Hillson
 Harvey and Kathy Silverman
In memory of Rebecca D. Silverman
 Harvey and Kathy Silverman
In memory of Tobie Kaplan

TECHNOLOGY FUND

Matt and Lynn Goldfarb
In appreciation of Tom Berman
 Matt and Lynn Goldfarb
In honor of Tom Berman
 Jerry and Susan Gordon
In honor of Tom Berman for all his help
 Shirley Rosen
In honor Tom Berman

YAD L'YAD

Patrick and Jackie Maidman

Yahrzeit Fund

Stephen and Susan Abramson
In memory of Ruth Abramson
 Linda Abromson
In memory of her father Yudy Elowitch
 Adam and Lisa Arens
In memory of Richard Jaffe
 Adam and Lisa Arens
In memory of Carole Jaffe
 James and Rachel Ash
In memory of Stephen R Klein
 Harvey and Sara Berman
In memory of Esther Zimmerman Kantor
 Harvey and Sara Berman
In memory of Yona Meyer Kantor
 Mark and Ellen Bramson
In memory of William Hamlin
 David and Janis Cohen
In memory of Bertha Cohen
 Norma Elowitch
In memory of Gussy Gottschalk
 Charlotte Farber
In memory of David Farber
 Charlotte Farber
In memory of Zella Farber
 Charlotte Farber
In memory of Charles Farber
 Charlotte Farber
In memory of Yetta Zimmerman
 Maxine Farber
In memory of David Farber
 Mark and Norma Filler
In memory Jack Leveille
 Dr. and Mrs. Robert Finegold
In memory of Marlene Finegold
 Joyce Freedlander
In memory of Donald Freedlander
 Joyce Freedlander
In memory of Ida Shrago
 Stu and Carol Gilbert
In memory of Julius Brecher
 Edward Goldman
In memory of Carlene Goldman
 Marcelle Gorrivan
In memory of Aunt Zahra Sousane

Helen Isenman and Susan Isenman
In memory of Morris J Isenman
 Helen Isenman and Susan Isenman
In memory of John W Isenman
 Helen Isenman and Susan Isenman
In memory of Maurice Levin
 Eileen Kalikow
In memory of Leon Goldberg
 Susan Leonard
In memory of Ruth Abramson
 Larry and Joan Levy
In memory of Carl Remar
 Eric Mack
In memory of Frances Weisberg Mack
 Roberta and John McMahon
In memory of Anna L Miller
 Ivan and Susan Most
In memory of Forrest Sheinwald
 Sam and Bette Novick
In memory of Jack Novick
 Sam and Bette Novick
In memory of David Astor
 Diane Perlin
In memory of Esther Albert
 Penny, Anthony and Eliot Rich
In memory of our beloved Mom
 Stephen and Lisa Schiffman
In memory of Beala Stark Schiffman
 Helen Schwartz
In memory of Adam Schwartz
 Morty and Dorothy Shulman
In memory of Harold Gorian
 Edward and Debra Siegel
In memory of Ruth Abramson
 Jack and Carol Simensky
In memory of Daniel Griff
 Jack and Carol Simensky
In memory of Stella Simensky
 Karen Stray-Gundersen and Jane Begert
In memory of Jake Shapell
 Ernest and Diana Sturman
In memory of Madeline Sturman
 Jeanne Tinkle
In memory of Murray Rosen
 John Riley and Carolyn Turcio-Gilman
In memory of Thelma Gould
 Ernie and Toby Wallach
In memory of Ludwig Stern
 Ross and Patty Weber
In memory of Harold Weber

✉ • ✉

SUPPORTING TEMPLE BETH EL

Contributing to the following TBE funds is a wonderful way to honor a loved one, commemorate a yahrzeit or celebrate a special event. To make a donation, please complete the form below and send it along with your payment to Temple Beth El. Every gift makes a difference - we appreciate your support!

- Adult Education Fund
- Annual Appeal
- Brotherhood Fund
- Building Fund
- David & Ethel Wilson Family Fund
- Education Director's Discretionary Fund
- Edward Weisberg Fund
- Endowment Fund
- General Fund
- Kadima Beth El (Hebrew School)
- Phyllis & Jonas B. Klein Fund
- Kiddush Fund
- Kol Yeladim Early Childhood Fund
- Koocher/Robinov Hebrew School Scholarship Fund
- Temple Beth El Memorial Park Fund
- Molly Finkelman Choir / Music Fund
- Norman Finberg USY Fund
- Prayer Book Fund
- Rabbi's Discretionary Fund
- Sisterhood
- Technology Fund
- Yad L'Yad (Caring Committee) Fund
- Yahrzeit Fund
- Youth Activity Fund

First & Last Name: _____

Telephone: _____

Email: _____

Address (street, city, zip): _____

(circle one) In honor of / In memory of: _____

Send acknowledgement to (name & address): _____

Check enclosed Credit card: Visa / MC

Credit card #: _____



JANUARY

WEDNESDAY, JAN. 1 - New Years Day
TBE OFFICE CLOSED

8:30 am Morning Minyan

FRIDAY, JAN. 3

4:00 pm Shabbat candle lighting time

5:30 pm Kabbalat Shabbat Services

SATURDAY, JAN. 4

9:30 am Shabbat Services

5:00 pm Havdalah time

SUNDAY, JAN. 5

9:00 am Kadima Beth El

9:00 am Morning Minyan & Schmooze and Shmear

FRIDAY, JAN. 10

4:08 pm Shabbat candle lighting time

5:30 pm Family Kabbalat Shabbat Services

6:30 pm Community Shabbat Dinner

SATURDAY, JAN. 11

9:30 am Shabbat Services

5:08 pm Havdalah time

7:00 pm AJLC Winter Film Series: *Driving Miss Daisy*

SUNDAY, JAN. 12

9:00 am Kadima Beth El

9:00 am Morning Minyan & Schmooze and Shmear

WEDNESDAY, JAN. 14

5:30 pm Executive Committee Meeting

FRIDAY, JAN. 17

4:16 pm Shabbat candle lighting time

5:30 pm Kabbalat Shabbat Services

SATURDAY, JAN. 18

9:30 am Shabbat Services

5:16 pm Havdalah time

SUNDAY, JAN. 19

9:00 pm Morning Minyan

MONDAY, JAN. 20 - Martin Luther King Day

TBE OFFICE CLOSED

8:30 am Morning Minyan

TUESDAY, JAN. 21

6:50 am Morning Minyan

5:30 pm TBE Board Meeting

FRIDAY, JAN. 24

4:25 pm Shabbat candle lighting time

5:30 pm Kabbalat Shabbat Services

SATURDAY, JAN. 25

9:30 am Shabbat Services

5:25 pm Havdalah time

7:00 pm AJLC Winter Film Series: *Cabaret*

SUNDAY, JAN. 26

9:00 am Kadima Beth El

9:00 am Morning Minyan & Schmooze and Shmear

FRIDAY, JAN. 31

4:35 pm Shabbat candle lighting time

5:30 pm Kabbalat Shabbat Services

FEBRUARY

SATURDAY, FEB. 1

9:30 am Shabbat Services

5:35 pm Havdalah time

SUNDAY, FEB. 2

9:00 am Kadima Beth El

9:00 am Morning Minyan & Schmooze and Shmear

TUESDAY, FEB. 4

5:30 pm Executive Committee Meeting

FRIDAY, FEB. 7

4:44 pm Shabbat candle lighting time

5:30 pm Family Kabbalat Shabbat Services

6:30 pm Community Shabbat Dinner

SATURDAY, FEB. 8

9:30 am Shabbat Services

5:44 pm Havdalah time

7:00 pm AJLC Winter Film Series: *The Producers*

SUNDAY, FEB. 9

9:00 am Kadima Beth El

9:00 am Morning Minyan & Schmooze and Shmear

TUESDAY, FEB. 11

5:30 pm TBE Board Meeting

FRIDAY, FEB. 14

4:54 pm Shabbat candle lighting time

5:30 pm Kabbalat Shabbat Service

SATURDAY, FEB. 15

9:30 am Shabbat Services

5:54 pm Havdalah time

SUNDAY, FEB. 16

9:00 am Morning Minyan

MONDAY, FEB. 17 - Presidents Day

TBE OFFICE CLOSED

8:30 am Morning Minyan

FRIDAY, FEB. 21

5:03 pm Shabbat candle lighting time

5:30 pm Kabbalat Shabbat Services

SATURDAY, FEB. 22

9:30 am Shabbat Services

6:03 pm Havdalah time

SUNDAY, FEB. 23

9:00 am Morning Minyan

FRIDAY, FEB. 28

5:12 pm Shabbat candle lighting time

5:30 pm Kabbalat Shabbat Services

SERVICES

Weekdays, M - F	6:50 am
Friday night Kabbalat Shabbat	5:30 pm
Saturday (Shabbat) and Holidays	9:30 am
Secular Holidays	8:30 am

KADIMA BETH EL RELIGIOUS SCHOOL PROGRAM

Sundays	9:00 am - 12:00 pm
Wednesdays	3:30 pm - 5:30 pm

PORTLAND CHEVRA KADISHA



*In time of need,
one Jew caring
for another*

JEWISH FUNERAL HOME

PreArrangement Counseling

471 Deering Avenue
Portland, ME 04103

207•774•3733

portlandjewishfuneralhome.org

SISTERHOOD DONATION UNDERWRITES NEW TABLECLOTHS AND NAPKINS FOR TBE



The TBE Sisterhood has generously offered to underwrite a major portion of the cost to purchase new tablecloths and napkins in updated colors and styles. Tables will be set with your choice of a beautiful damask cloth and napkins in Navy Blue or Bermuda Sand, in the proper round sizes. White cloths will be available to cover the buffet tables. We are excited to be able to replace our old table linens with these elegant new cloths for B'nai Mitzvah luncheons, fundraisers and special event dinners, holiday celebrations and more.

**But we still need an additional \$1,400
to place our order!**

Any extra funds will be used to purchase white cloth napkins. Please contact the Temple office at 774-2649 and make your donation today!

We're almost there!!

MEMBERSHIP BUSINESS DIRECTORY

Please support our members

Need a car, a therapist, or perhaps an attorney or realtor? TBE members are a great business resource.

Promote your business in our Member Business Directory for just \$36 for the year.

Contact TBE at 774-2649 for more information.

Office Hours By Appointment

CLINICAL COUNSELING ASSOCIATES OF MAINE. P.A.

H. MICHAEL ALPREN, J.D., L.C.P.C., L.M.F.T.

1863 Washington Avenue
Portland, Maine 04103-1625

Telephones: (207) 797-7900
(207) 576-8580



ClearWater
PSYCHOTHERAPY

Barbara Peisner, LCSW
Licensed Clinical Social Worker

96 India Street
Portland, ME 04101
207.772.2202

www.clearwaterpsychotherapy.com

Individuals, Couples

depression, anxiety, perinatal
mental health, bereavement,
hypnotherapy

NOW YOU'RE THINKING GREEN!!

**PATRIOT
SUBARU**



www.patriotsubaru.com **Route One, Saco**
1-866-284-7900



- Firestone
- Bridgestone
- Nokian

DICK ARONSON

President

Fax (207) 772-2430
(207) 775-3777
(800) 696-0699

185 Kennebec Street
Portland, ME 04101



TEMPLE BETH EL

400 Deering Avenue
Portland, ME 04103

(207) 774-2649
www.tbemaine.org



WEATHER ALERTS & TEMPLE CLOSURES

In the case of inclement weather, Temple Beth El will endeavor to keep our staff and Temple community safe by making the appropriate decision on closings. You can find this closing information for the building, prayer services, or Kadima Beth El Religious school in the following ways:

- Portland Radio Group Stations: WGAN, WMGX, WPOR & WYNZ
- WGME TV News Channel 13
- WMTW TV News Channel 8
- WCSH TV News Channel 6
- The front page alert on our website: www.tbemaine.org
- In an email to Kadima Beth El parents
- The voice message on our main phone number: (207) 774-2649

SUBMISSION DEADLINE for the March - April 2014 issue is Thursday, February 6.

Please submit material via e-mail as text in the body of the message or as an attached Microsoft Word document to office@tbemaine.org. *Temple Beth El reserves the right to edit all material.*